



**STATE POPULATION OF 39.11 MILLION IN JULY REFLECTS
CONTINING RECOVERY FROM COVID-ERA DECLINE**

FOR IMMEDIATE RELEASE:
December 19, 2023

CONTACT: H.D. Palmer (916) 323-0648
Walter Schwarm (916) 323-4086

SACRAMENTO – The decline in California's population continued to slow during the past fiscal year, reaching 39.11 million as of July 1st, according to official estimates released today by the California Department of Finance.

The 0.1-percent decline of 37,200 since July 1, 2022 is a fraction of the 295,000 decline (-0.75 percent) during the first full fiscal year of COVID-19 in 2020-2021. In 2022-23, that decline dropped by more than half to 100,428 (-0.26 percent). Above-average deaths have continued to decline from their 2021 peak, while immigration levels have largely recovered since the end of stringent federal rules imposed early in the COVID-19 response.

Leading factors contributing to population trends in the past fiscal year include:

- Natural increase –the difference between the number of births and deaths — added 107,300 people from 2022 to 2023 with 409,200 births, and 301,900 deaths. Births were down from 423,400 in the year ending July 1, 2022, while deaths were down from 318,500.
- After two consecutive years of decline, foreign immigration recovered to pre-pandemic levels, with a net gain of 115,900 in 2022-2023.
- Domestic out-migration continued its decline in 2022-23 at 260,400 people – dropping from 361,270 in 2020-21 and 295,578 in 2021-22.

Net domestic out-migration is not a new phenomenon; since 2016, it has exceeded net international migration – compounded in recent years by restrictive federal legal immigration policy -- leaving natural increase as the source of population growth. Natural increase continues to be lower because of continuing declines in child-bearing as well as increased deaths from an aging population.

California's 58 counties range in size from Alpine County, with just over 1,160 residents, to Los Angeles County with 9.8 million residents. Population increased in 16 counties, with most growth in the Central Valley and the San Francisco Bay Area. Amador and Placer counties experienced natural decline but still gained population because of positive domestic and international migration flows. Population gains in Fresno, Kings, Merced, Sacramento, San Diego, and San Joaquin counties reflect natural increase exceeding losses in net migration. Population declined in five of the ten counties with one million or more people: Contra Costa, Los Angeles, Orange, Riverside, and San Bernardino.

Four counties in the San Francisco Bay Area experienced positive population growth after a short period of population decline during the pandemic's peak. Alameda, Santa Clara, and San Francisco counties were among the top five in population gain, showing growth in both natural increase and net migration. In particular, San Francisco City and County had the highest population growth from net migration in the state, with an increase of 4,700 persons in both domestic and international migration.

Other highlights of the July 1, 2023 county population report include:

- The state's ten largest counties remain Los Angeles, San Diego, Orange, Riverside, San Bernardino, Santa Clara, Alameda, Sacramento, Contra Costa, and Fresno, with each having more than one million residents. These ten counties represent 72 percent of California's population. Five of those counties had positive population growth and Alameda and Santa Clara counties had positive population growth from net migration and the largest numeric changes in 2022-23.
- Population growth rates ranged from a high of 0.76 percent in Yuba County to a low of -4.44 percent in Lassen County. The number of counties with negative population growth has increased each year across the decade. Forty-two counties had population losses this year.
- Although natural increase was a main source of population growth in the state, 26 counties experienced natural decrease—more deaths than births. Unique among those counties, natural decrease in Amador and Placer counties was offset by positive net migration, especially net domestic migration.

Background Information

Population estimates produced by Finance are mandated by the California Constitution and various codes. They are used by state agencies, California counties, academic institutions, private research organizations, the media, and the public. Primary uses include budgeting, needs assessment, program planning and evaluation, distribution of state funds, and the calculation of rates (such as birth, death, and incarceration).

Finance estimates population each year based on population changes in births, deaths, domestic migration, and international migration. They are developed using aggregate data from a variety of sources, including birth and death counts provided by the Department of Public Health, driver's license and driver's license address change data from the Department of Motor Vehicles, housing unit data from local governments, school enrollment data from the Department of Education, and federal income tax return data from the U.S. Internal Revenue Service. These statistical reports of administrative records do not disclose any information about individuals.

For the first time, this data series uses the 2020 Census as the benchmark population following the release of the 2020 Census Demographic and Housing Characteristics file in May 2023. This estimate reflects revisions to the preliminary July 1, 2022 state and county estimates released in January 2023, with updated data on domestic migration from the Internal Revenue Service.

County ranking tables, maps, and the E-2 (*California County Population Estimates and Components of Change by Year, July 1, 2010-2023*) methodology and data tables are included. The E-2 and companion reports E-6 (*Population Estimates and Components of Change by County, July 1, 2010-2023*) and E-7 (*California Population Estimates, with Components of Change and Crude Rates, July 1, 1900-2023*), are on the Department's website: <http://www.dof.ca.gov/Forecasting/Demographics/Estimates>.

#

July 1, 2023 County Estimates Ranked by Size, Numeric and Percent Change since July 1, 2020

Rank	County	July 1, 2023 Estimate	Percent of State	Numeric Rank	County	Numeric Change	Percent Rank	County	Percent Change
	California	39,109,070			California	-37,203		California	-0.10%
1	Los Angeles	9,825,708	25.12%	1	Santa Clara	8,475	1	Yuba	0.76%
2	San Diego	3,297,860	8.43%	2	Alameda	6,062	2	Madera	0.74%
3	Orange	3,142,277	8.03%	3	San Francisco	4,925	3	Mono	0.67%
4	Riverside	2,431,254	6.22%	4	San Diego	3,949	4	San Francisco	0.58%
5	San Bernardino	2,170,593	5.55%	5	Sacramento	3,187	5	Santa Clara	0.45%
6	Santa Clara	1,911,749	4.89%	6	San Mateo	2,813	6	Colusa	0.42%
7	Alameda	1,656,037	4.23%	7	Madera	1,170	7	San Mateo	0.38%
8	Sacramento	1,581,831	4.04%	8	Placer	1,014	8	Alameda	0.37%
9	Contra Costa	1,146,536	2.93%	9	Fresno	962	9	Kings	0.30%
10	Fresno	1,012,424	2.59%	10	Yuba	630	10	Placer	0.25%
11	Kern	903,372	2.31%	11	San Joaquin	511	11	Sacramento	0.20%
12	San Francisco	848,019	2.17%	12	Merced	460	12	Merced	0.16%
13	Ventura	825,937	2.11%	13	Kings	451	13	San Diego	0.12%
14	San Joaquin	784,528	2.01%	14	Colusa	91	14	Fresno	0.10%
15	San Mateo	749,075	1.92%	15	Mono	88	15	San Joaquin	0.07%
16	Stanislaus	545,704	1.40%	16	Amador	17	16	Amador	0.04%
17	Sonoma	479,826	1.23%	17	Alpine	-10	17	Tulare	-0.01%
18	Tulare	474,792	1.21%	18	Tuolumne	-22	18	Riverside	-0.04%
19	Solano	446,745	1.14%	19	Sierra	-34	19	Tuolumne	-0.04%
20	Santa Barbara	442,614	1.13%	20	Trinity	-57	20	Solano	-0.06%
21	Monterey	436,476	1.12%	21	Tulare	-69	21	Monterey	-0.08%
22	Placer	410,706	1.05%	22	Modoc	-71	22	San Luis Obispo	-0.13%
23	Merced	285,600	0.73%	23	Mariposa	-83	23	Imperial	-0.15%
24	San Luis Obispo	280,251	0.72%	24	Inyo	-116	24	Los Angeles	-0.15%
25	Santa Cruz	263,101	0.67%	25	Calaveras	-164	25	Humboldt	-0.20%
26	Marin	254,744	0.65%	26	Solano	-267	26	Santa Barbara	-0.30%
27	Yolo	220,381	0.56%	27	Humboldt	-269	27	Sonoma	-0.31%
28	Butte	205,860	0.53%	28	Imperial	-275	28	Butte	-0.31%
29	El Dorado	187,285	0.48%	29	Tehama	-316	29	Contra Costa	-0.31%
30	Imperial	179,639	0.46%	30	Plumas	-325	30	Trinity	-0.36%
31	Shasta	178,958	0.46%	31	Siskiyou	-346	31	Calaveras	-0.37%
32	Madera	158,457	0.41%	32	Del Norte	-356	32	Orange	-0.37%
33	Kings	152,405	0.39%	33	Monterey	-367	33	San Bernardino	-0.40%
34	Napa	134,484	0.34%	34	San Luis Obispo	-378	34	Stanislaus	-0.40%
35	Humboldt	134,388	0.34%	35	San Benito	-399	35	Marin	-0.43%
36	Nevada	100,400	0.26%	36	Glenn	-410	36	Yolo	-0.43%
37	Sutter	98,151	0.25%	37	Sutter	-490	37	Shasta	-0.46%
38	Mendocino	89,316	0.23%	38	Butte	-638	38	Tehama	-0.49%
39	Yuba	83,297	0.21%	39	Mendocino	-644	39	Mariposa	-0.49%
40	Lake	66,446	0.17%	40	Nevada	-737	40	Sutter	-0.50%
41	San Benito	65,082	0.17%	41	Lake	-760	41	Ventura	-0.54%
42	Tehama	64,677	0.17%	42	Shasta	-828	42	Kern	-0.59%
43	Tuolumne	53,387	0.14%	43	Riverside	-949	43	San Benito	-0.61%
44	Calaveras	44,605	0.11%	44	Yolo	-961	44	Inyo	-0.62%
45	Siskiyou	42,961	0.11%	45	Napa	-1,013	45	Mendocino	-0.72%
46	Amador	40,122	0.10%	46	Marin	-1,107	46	Nevada	-0.73%
47	Lassen	28,232	0.07%	47	Lassen	-1,312	47	Napa	-0.75%
48	Glenn	28,039	0.07%	48	Santa Barbara	-1,342	48	Santa Cruz	-0.78%
49	Del Norte	26,382	0.07%	49	Sonoma	-1,471	49	Siskiyou	-0.80%
50	Colusa	21,905	0.06%	50	Santa Cruz	-2,057	50	Modoc	-0.83%
51	Plumas	18,955	0.05%	51	El Dorado	-2,101	51	Alpine	-0.85%
52	Inyo	18,731	0.05%	52	Stanislaus	-2,201	52	Sierra	-1.07%
53	Mariposa	16,860	0.04%	53	Contra Costa	-3,578	53	El Dorado	-1.11%
54	Trinity	15,870	0.04%	54	Ventura	-4,497	54	Lake	-1.13%
55	Mono	13,273	0.03%	55	Kern	-5,336	55	Del Norte	-1.33%
56	Modoc	8,446	0.02%	56	San Bernardino	-8,670	56	Glenn	-1.44%
57	Sierra	3,152	0.01%	57	Orange	-11,765	57	Plumas	-1.69%
58	Alpine	1,165	0.00%	58	Los Angeles	-15,217	58	Lassen	-4.44%

California County Rankings by Size, Numeric and Percent Change: July 1, 2020 -July 1, 2023

County	Size Rank	Numeric Change		Percent Change	
		Rank	Rank	Rank	County
Alameda	7	2	8	Alameda	
Alpine	58	17	51	Alpine	
Amador	46	16	16	Amador	
Butte	28	38	28	Butte	
Calaveras	44	25	31	Calaveras	
Colusa	50	14	6	Colusa	
Contra Costa	9	53	29	Contra Costa	
Del Norte	49	32	55	Del Norte	
El Dorado	29	51	53	El Dorado	
Fresno	10	9	14	Fresno	
Glenn	48	36	56	Glenn	
Humboldt	35	27	25	Humboldt	
Imperial	30	28	23	Imperial	
Inyo	52	24	44	Inyo	
Kern	11	55	42	Kern	
Kings	33	13	9	Kings	
Lake	40	41	54	Lake	
Lassen	47	47	58	Lassen	
Los Angeles	1	58	24	Los Angeles	
Madera	32	7	2	Madera	
Marin	26	46	35	Marin	
Mariposa	53	23	39	Mariposa	
Mendocino	38	39	45	Mendocino	
Merced	23	12	12	Merced	
Modoc	56	22	50	Modoc	
Mono	55	15	3	Mono	
Monterey	21	33	21	Monterey	
Napa	34	45	47	Napa	
Nevada	36	40	46	Nevada	
Orange	3	57	32	Orange	
Placer	22	8	10	Placer	
Plumas	51	30	57	Plumas	
Riverside	4	43	18	Riverside	
Sacramento	8	5	11	Sacramento	
San Benito	41	35	43	San Benito	
San Bernardino	5	56	33	San Bernardino	
San Diego	2	4	13	San Diego	
San Francisco	12	3	4	San Francisco	
San Joaquin	14	11	15	San Joaquin	
San Luis Obispo	24	34	22	San Luis Obispo	
San Mateo	15	6	7	San Mateo	
Santa Barbara	20	48	26	Santa Barbara	
Santa Clara	6	1	5	Santa Clara	
Santa Cruz	25	50	48	Santa Cruz	
Shasta	31	42	37	Shasta	
Sierra	57	19	52	Sierra	
Siskiyou	45	31	49	Siskiyou	
Solano	19	26	20	Solano	
Sonoma	17	49	27	Sonoma	
Stanislaus	16	52	34	Stanislaus	
Sutter	37	37	40	Sutter	
Tehama	42	29	38	Tehama	
Trinity	54	20	30	Trinity	
Tulare	18	21	17	Tulare	
Tuolumne	43	18	19	Tuolumne	
Ventura	13	54	41	Ventura	
Yolo	27	44	36	Yolo	
Yuba	39	10	1	Yuba	

E-2. California County Population Estimates and Components of Change
Revised July 1, 2022 and preliminary July 1, 2023
Table 1.

County	Total Population		Change 2022-2023		Components of Change					
	Revised July 1, 2022	Preliminary July 1, 2023	Number	Percent	Births	Deaths	Natural Increase	Net Migration	Net Immigration	Net Domestic Migration
Alameda	1,649,975	1,656,037	6,062	0.37	16,537	10,769	5,768	294	7,127	-6,833
Alpine	1,175	1,165	-10	-0.85	5	15	-10	0	0	0
Amador	40,105	40,122	17	0.04	318	536	-218	235	16	219
Butte	206,498	205,860	-638	-0.31	1,905	2,306	-401	-237	164	-401
Calaveras	44,769	44,605	-164	-0.37	377	591	-214	50	13	37
Colusa	21,814	21,905	91	0.42	279	195	84	7	66	-59
Contra Costa	1,150,114	1,146,536	-3,578	-0.31	11,487	8,851	2,636	-6,214	4,259	-10,473
Del Norte	26,738	26,382	-356	-1.33	256	410	-154	-202	13	-215
El Dorado	189,386	187,285	-2,101	-1.11	1,436	1,811	-375	-1,726	132	-1,858
Fresno	1,011,462	1,012,424	962	0.10	13,631	7,968	5,663	-4,701	2,271	-6,972
Glenn	28,449	28,039	-410	-1.44	325	316	9	-419	40	-459
Humboldt	134,657	134,388	-269	-0.20	1,136	1,593	-457	188	72	116
Imperial	179,914	179,639	-275	-0.15	2,413	1,305	1,108	-1,383	1,454	-2,837
Inyo	18,847	18,731	-116	-0.62	141	222	-81	-35	19	-54
Kern	908,708	903,372	-5,336	-0.59	12,221	7,488	4,733	-10,069	1,951	-12,020
Kings	151,954	152,405	451	0.30	2,061	1,033	1,028	-577	238	-815
Lake	67,206	66,446	-760	-1.13	645	1,008	-363	-397	51	-448
Lassen	29,544	28,232	-1,312	-4.44	248	330	-82	-1,230	8	-1,238
Los Angeles	9,840,925	9,825,708	-15,217	-0.15	93,272	72,202	21,070	-36,287	31,393	-67,680
Madera	157,287	158,457	1,170	0.74	2,158	1,297	861	309	209	100
Marin	255,851	254,744	-1,107	-0.43	2,179	2,204	-25	-1,082	449	-1,531
Mariposa	16,943	16,860	-83	-0.49	166	236	-70	-13	3	-16
Mendocino	89,960	89,316	-644	-0.72	817	1,001	-184	-460	103	-563
Merced	285,140	285,600	460	0.16	3,784	2,112	1,672	-1,212	566	-1,778
Modoc	8,517	8,446	-71	-0.83	51	128	-77	6	2	4
Mono	13,185	13,273	88	0.67	106	78	28	60	9	51
Monterey	436,843	436,476	-367	-0.08	5,474	2,911	2,563	-2,930	928	-3,858
Napa	135,497	134,484	-1,013	-0.75	1,248	1,298	-50	-963	340	-1,303
Nevada	101,137	100,400	-737	-0.73	760	1,160	-400	-337	64	-401
Orange	3,154,042	3,142,277	-11,765	-0.37	30,251	23,010	7,241	-19,006	12,069	-31,075
Placer	409,692	410,706	1,014	0.25	3,795	3,808	-13	1,027	754	273
Plumas	19,280	18,955	-325	-1.69	136	243	-107	-218	8	-226
Riverside	2,432,203	2,431,254	-949	-0.04	26,861	20,048	6,813	-7,762	4,747	-12,509
Sacramento	1,578,644	1,581,831	3,187	0.20	17,998	13,327	4,671	-1,484	6,609	-8,093
San Benito	65,481	65,082	-399	-0.61	810	439	371	-770	133	-903
San Bernardino	2,179,263	2,170,593	-8,670	-0.40	25,734	16,538	9,196	-17,866	4,337	-22,203
San Diego	3,293,911	3,297,860	3,949	0.12	36,394	23,998	12,396	-8,447	9,521	-17,968
San Francisco	843,094	848,019	4,925	0.58	6,830	6,587	243	4,682	3,612	1,070
San Joaquin	784,017	784,528	511	0.07	9,764	6,188	3,576	-3,065	2,600	-5,665
San Luis Obispo	280,629	280,251	-378	-0.13	2,372	2,626	-254	-124	238	-362
San Mateo	746,262	749,075	2,813	0.38	7,256	5,176	2,080	733	2,456	-1,723
Santa Barbara	443,956	442,614	-1,342	-0.30	5,582	3,546	2,036	-3,378	642	-4,020
Santa Clara	1,903,274	1,911,749	8,475	0.45	18,651	11,221	7,430	1,045	8,547	-7,502
Santa Cruz	265,158	263,101	-2,057	-0.78	2,209	1,971	238	-2,295	378	-2,673
Shasta	179,786	178,958	-828	-0.46	1,790	2,440	-650	-178	98	-276
Sierra	3,186	3,152	-34	-1.07	16	50	-34	0	3	-3
Siskiyou	43,307	42,961	-346	-0.80	339	633	-294	-52	16	-68
Solano	447,012	446,745	-267	-0.06	4,712	3,927	785	-1,052	1,018	-2,070
Sonoma	481,297	479,826	-1,471	-0.31	4,387	4,679	-292	-1,179	816	-1,995
Stanislaus	547,905	545,704	-2,201	-0.40	6,935	4,857	2,078	-4,279	1,678	-5,957
Sutter	98,641	98,151	-490	-0.50	1,212	889	323	-813	648	-1,461
Tehama	64,993	64,677	-316	-0.49	754	815	-61	-255	45	-300
Trinity	15,927	15,870	-57	-0.36	96	180	-84	27	9	18
Tulare	474,861	474,792	-69	-0.01	6,727	3,511	3,216	-3,285	759	-4,044
Tuolumne	53,409	53,387	-22	-0.04	448	759	-311	289	22	267
Ventura	830,434	825,937	-4,497	-0.54	8,624	6,864	1,760	-6,257	1,517	-7,774
Yolo	221,342	220,381	-961	-0.43	1,880	1,480	400	-1,361	575	-1,936
Yuba	82,667	83,297	630	0.76	1,151	697	454	176	121	55
California	39,146,273	39,109,070	-37,203	-0.10	409,150	301,881	107,269	-144,472	115,936	-260,408

E-2. California County Population Estimates and Components of Change
Revised July 1, 2021 and revised July 1, 2022

Table 2.

County	Total Population		Change 2021-2022		Components of Change					
	Revised July 1, 2021	Preliminary July 1, 2022	Number	Percent	Births	Deaths	Natural Increase	Net Migration	Net Immigration	Net Domestic Migration
Alameda	1,657,465	1,649,975	-7,490	-0.45	16,956	10,953	6,003	-13,493	5,346	-18,839
Alpine	1,180	1,175	-5	-0.42	12	17	-5	0	0	0
Amador	40,262	40,105	-157	-0.39	329	580	-251	94	6	88
Butte	206,121	206,498	377	0.18	2,032	2,607	-575	952	99	853
Calaveras	45,011	44,769	-242	-0.54	386	626	-240	-2	12	-14
Colusa	21,884	21,814	-70	-0.32	268	185	83	-153	78	-231
Contra Costa	1,159,901	1,150,114	-9,787	-0.84	11,750	9,059	2,691	-12,478	2,824	-15,302
Del Norte	27,368	26,738	-630	-2.30	233	426	-193	-437	10	-447
El Dorado	191,437	189,386	-2,051	-1.07	1,634	1,905	-271	-1,780	128	-1,908
Fresno	1,010,417	1,011,462	1,045	0.10	14,029	9,178	4,851	-3,806	1,809	-5,615
Glenn	28,709	28,449	-260	-0.91	371	345	26	-286	30	-316
Humboldt	134,695	134,657	-38	-0.03	1,278	1,647	-369	331	56	275
Imperial	179,807	179,914	107	0.06	2,598	1,511	1,087	-980	1,180	-2,160
Inyo	18,874	18,847	-27	-0.14	179	253	-74	47	12	35
Kern	908,418	908,708	290	0.03	12,505	8,328	4,177	-3,887	1,471	-5,358
Kings	151,751	151,954	203	0.13	2,100	1,224	876	-673	140	-813
Lake	67,714	67,206	-508	-0.75	728	1,003	-275	-233	43	-276
Lassen	31,054	29,544	-1,510	-4.86	278	399	-121	-1,389	2	-1,391
Los Angeles	9,908,772	9,840,925	-67,847	-0.68	96,365	75,020	21,345	-89,192	26,144	-115,336
Madera	157,008	157,287	279	0.18	2,110	1,527	583	-304	141	-445
Marin	258,719	255,851	-2,868	-1.11	2,364	2,111	253	-3,121	292	-3,413
Mariposa	17,015	16,943	-72	-0.42	146	250	-104	32	6	26
Mendocino	90,854	89,960	-894	-0.98	852	1,041	-189	-705	73	-778
Merced	281,695	285,140	3,445	1.22	3,883	2,312	1,571	1,874	437	1,437
Modoc	8,542	8,517	-25	-0.29	56	131	-75	50	0	50
Mono	13,276	13,185	-91	-0.69	114	72	42	-133	9	-142
Monterey	438,349	436,843	-1,506	-0.34	5,675	2,925	2,750	-4,256	782	-5,038
Napa	136,891	135,497	-1,394	-1.02	1,137	1,320	-183	-1,211	241	-1,452
Nevada	102,435	101,137	-1,298	-1.27	794	1,190	-396	-902	31	-933
Orange	3,164,848	3,154,042	-10,806	-0.34	31,036	23,516	7,520	-18,326	8,135	-26,461
Placer	408,769	409,692	923	0.23	3,831	4,068	-237	1,160	381	779
Plumas	19,733	19,280	-453	-2.30	132	265	-133	-320	2	-322
Riverside	2,429,268	2,432,203	2,935	0.12	27,994	21,773	6,221	-3,286	4,131	-7,417
Sacramento	1,583,966	1,578,644	-5,322	-0.34	18,354	14,335	4,019	-9,341	5,001	-14,342
San Benito	65,182	65,481	299	0.46	891	473	418	-119	128	-247
San Bernardino	2,183,756	2,179,263	-4,493	-0.21	26,744	18,725	8,019	-12,512	3,749	-16,261
San Diego	3,285,268	3,293,911	8,643	0.26	38,081	25,560	12,521	-3,878	7,651	-11,529
San Francisco	841,721	843,094	1,373	0.16	7,327	6,385	942	431	3,419	-2,988
San Joaquin	781,946	784,017	2,071	0.26	10,043	6,902	3,141	-1,070	1,720	-2,790
San Luis Obispo	278,527	280,629	2,102	0.75	2,500	2,734	-234	2,336	252	2,084
San Mateo	749,908	746,262	-3,646	-0.49	7,628	5,007	2,621	-6,267	1,991	-8,258
Santa Barbara	439,100	443,956	4,856	1.11	5,685	3,541	2,144	2,712	605	2,107
Santa Clara	1,899,926	1,903,274	3,348	0.18	19,366	11,134	8,232	-4,884	6,055	-10,939
Santa Cruz	263,170	265,158	1,988	0.76	2,277	1,941	336	1,652	369	1,283
Shasta	181,374	179,786	-1,588	-0.88	1,795	2,789	-994	-594	76	-670
Sierra	3,212	3,186	-26	-0.81	15	43	-28	2	0	2
Siskiyou	43,543	43,307	-236	-0.54	346	763	-417	181	13	168
Solano	449,539	447,012	-2,527	-0.56	4,985	4,106	879	-3,406	623	-4,029
Sonoma	483,300	481,297	-2,003	-0.41	4,462	4,538	-76	-1,927	596	-2,523
Stanislaus	550,885	547,905	-2,980	-0.54	7,329	5,430	1,899	-4,879	1,238	-6,117
Sutter	99,020	98,641	-379	-0.38	1,244	1,047	197	-576	258	-834
Tehama	65,424	64,993	-431	-0.66	781	959	-178	-253	30	-283
Trinity	16,009	15,927	-82	-0.51	101	198	-97	15	2	13
Tulare	474,780	474,861	81	0.02	6,831	4,205	2,626	-2,545	687	-3,232
Tuolumne	54,690	53,409	-1,281	-2.34	450	872	-422	-859	7	-866
Ventura	837,619	830,434	-7,185	-0.86	8,775	6,735	2,040	-9,225	1,231	-10,456
Yolo	214,339	221,342	7,003	3.27	1,949	1,553	396	6,607	502	6,105
Yuba	82,256	82,667	411	0.50	1,238	775	463	-52	60	-112
California	39,246,702	39,146,273	-100,429	-0.26	423,352	318,517	104,835	-205,264	90,314	-295,578

E-2. California County Population Estimates and Components of Change
 Revised July 1, 2020 and revised July 1, 2021

Table 3.

County	Total Population		Change 2020-2021		Components of Change					
	Revised July 1, 2020	Revised July 1, 2021	Number	Percent	Births	Deaths	Natural Increase	Net Migration	Net Immigration	Net Domestic Migration
Alameda	1,680,487	1,657,465	-23,022	-1.37	16,724	11,595	5,129	-28,151	-1,559	-26,592
Alpine	1,202	1,180	-22	-1.83	12	33	-21	-1	0	-1
Amador	40,440	40,262	-178	-0.44	318	503	-185	7	6	1
Butte	210,349	206,121	-4,228	-2.01	2,001	2,479	-478	-3,750	-101	-3,649
Calaveras	45,262	45,011	-251	-0.55	366	585	-219	-32	7	-39
Colusa	21,867	21,884	17	0.08	295	194	101	-84	10	-94
Contra Costa	1,167,327	1,159,901	-7,426	-0.64	11,738	9,123	2,615	-10,041	778	-10,819
Del Norte	27,645	27,368	-277	-1.00	238	386	-148	-129	1	-130
El Dorado	191,522	191,437	-85	-0.04	1,508	1,862	-354	269	28	241
Fresno	1,007,436	1,010,417	2,981	0.30	13,661	9,574	4,087	-1,106	459	-1,565
Glenn	28,854	28,709	-145	-0.50	375	301	74	-219	12	-231
Humboldt	136,406	134,695	-1,711	-1.25	1,218	1,501	-283	-1,428	16	-1,444
Imperial	180,376	179,807	-569	-0.32	2,306	1,902	404	-973	302	-1,275
Inyo	18,954	18,874	-80	-0.42	174	248	-74	-6	6	-12
Kern	905,783	908,418	2,635	0.29	12,244	8,390	3,854	-1,219	428	-1,647
Kings	152,531	151,751	-780	-0.51	2,180	1,206	974	-1,754	60	-1,814
Lake	67,864	67,714	-150	-0.22	676	904	-228	78	35	43
Lassen	31,926	31,054	-872	-2.73	270	341	-71	-801	3	-804
Los Angeles	10,014,848	9,908,772	-106,076	-1.06	94,417	89,114	5,303	-111,379	-522	-110,857
Madera	156,422	157,008	586	0.37	2,072	1,461	611	-25	42	-67
Marin	262,161	258,719	-3,442	-1.31	2,183	2,211	-28	-3,414	115	-3,529
Mariposa	17,102	17,015	-87	-0.51	140	222	-82	-5	2	-7
Mendocino	91,319	90,854	-465	-0.51	907	1,070	-163	-302	21	-323
Merced	281,128	281,695	567	0.20	3,821	2,382	1,439	-872	-2	-870
Modoc	8,686	8,542	-144	-1.66	41	135	-94	-50	1	-51
Mono	13,368	13,276	-92	-0.69	111	63	48	-140	2	-142
Monterey	439,762	438,349	-1,413	-0.32	5,362	3,327	2,035	-3,448	148	-3,596
Napa	138,058	136,891	-1,167	-0.85	1,209	1,301	-92	-1,075	63	-1,138
Nevada	102,648	102,435	-213	-0.21	788	1,225	-437	224	6	218
Orange	3,188,652	3,164,848	-23,804	-0.75	29,995	26,313	3,682	-27,486	-624	-26,862
Placer	406,495	408,769	2,274	0.56	3,573	3,784	-211	2,485	133	2,352
Plumas	19,871	19,733	-138	-0.69	155	268	-113	-25	2	-27
Riverside	2,423,288	2,429,268	5,980	0.25	27,081	24,040	3,041	2,939	450	2,489
Sacramento	1,587,542	1,583,966	-3,576	-0.23	17,897	13,987	3,910	-7,486	1,704	-9,190
San Benito	64,450	65,182	732	1.14	751	437	314	418	25	393
San Bernardino	2,185,348	2,183,756	-1,592	-0.07	26,197	21,738	4,459	-6,051	944	-6,995
San Diego	3,304,801	3,285,268	-19,533	-0.59	36,623	26,747	9,876	-29,409	-736	-28,673
San Francisco	870,734	841,721	-29,013	-3.33	7,514	6,709	805	-29,818	-257	-29,561
San Joaquin	779,968	781,946	1,978	0.25	9,655	7,544	2,111	-133	619	-752
San Luis Obispo	282,671	278,527	-4,144	-1.47	2,376	2,641	-265	-3,879	-51	-3,828
San Mateo	762,754	749,908	-12,846	-1.68	7,426	5,194	2,232	-15,078	351	-15,429
Santa Barbara	447,860	439,100	-8,760	-1.96	5,311	3,703	1,608	-10,368	-1,733	-8,635
Santa Clara	1,926,546	1,899,926	-26,620	-1.38	18,829	11,919	6,910	-33,530	-596	-32,934
Santa Cruz	271,222	263,170	-8,052	-2.97	2,176	2,097	79	-8,131	-896	-7,235
Shasta	182,029	181,374	-655	-0.36	1,809	2,616	-807	152	19	133
Sierra	3,232	3,212	-20	-0.62	27	47	-20	0	4	-4
Siskiyou	43,996	43,543	-453	-1.03	373	716	-343	-110	248	-358
Solano	452,943	449,539	-3,404	-0.75	4,896	3,939	957	-4,361	202	-4,563
Sonoma	488,765	483,300	-5,465	-1.12	4,422	4,610	-188	-5,277	321	-5,598
Stanislaus	553,129	550,885	-2,244	-0.41	6,904	5,802	1,102	-3,346	62	-3,408
Sutter	99,474	99,020	-454	-0.46	1,243	948	295	-749	12	-761
Tehama	65,847	65,424	-423	-0.64	749	879	-130	-293	0	-293
Trinity	16,107	16,009	-98	-0.61	117	177	-60	-38	198	-236
Tulare	472,757	474,780	2,023	0.43	6,565	4,165	2,400	-377	6	-383
Tuolumne	55,492	54,690	-802	-1.45	401	767	-366	-436	398	-834
Ventura	844,214	837,619	-6,595	-0.78	8,381	7,360	1,021	-7,616	57	-7,673
Yolo	217,883	214,339	-3,544	-1.63	1,948	1,532	416	-3,960	-1,765	-2,195
Yuba	81,919	82,256	337	0.41	1,104	763	341	-4	13	-17
California	39,541,722	39,246,702	-295,020	-0.75	411,853	345,080	66,773	-361,793	-523	-361,270

E-2. California County Population Estimates and Percent Change
Revised July 1, 2020 through Preliminary July 1, 2023
Table 4.

County	Revised July 1, 2020	Revised July 1, 2021	Revised July 1, 2022	Preliminary July 1, 2023
Alameda	1,680,487	1,657,465	1,649,975	1,656,037
Alpine	1,202	1,180	1,175	1,165
Amador	40,440	40,262	40,105	40,122
Butte	210,349	206,121	206,498	205,860
Calaveras	45,262	45,011	44,769	44,605
Colusa	21,867	21,884	21,814	21,905
Contra Costa	1,167,327	1,159,901	1,150,114	1,146,536
Del Norte	27,645	27,368	26,738	26,382
El Dorado	191,522	191,437	189,386	187,285
Fresno	1,007,436	1,010,417	1,011,462	1,012,424
Glenn	28,854	28,709	28,449	28,039
Humboldt	136,406	134,695	134,657	134,388
Imperial	180,376	179,807	179,914	179,639
Inyo	18,954	18,874	18,847	18,731
Kern	905,783	908,418	908,708	903,372
Kings	152,531	151,751	151,954	152,405
Lake	67,864	67,714	67,206	66,446
Lassen	31,926	31,054	29,544	28,232
Los Angeles	10,014,848	9,908,772	9,840,925	9,825,708
Madera	156,422	157,008	157,287	158,457
Marin	262,161	258,719	255,851	254,744
Mariposa	17,102	17,015	16,943	16,860
Mendocino	91,319	90,854	89,960	89,316
Merced	281,128	281,695	285,140	285,600
Modoc	8,686	8,542	8,517	8,446
Mono	13,368	13,276	13,185	13,273
Monterey	439,762	438,349	436,843	436,476
Napa	138,058	136,891	135,497	134,484
Nevada	102,648	102,435	101,137	100,400
Orange	3,188,652	3,164,848	3,154,042	3,142,277
Placer	406,495	408,769	409,692	410,706
Plumas	19,871	19,733	19,280	18,955
Riverside	2,423,288	2,429,268	2,432,203	2,431,254
Sacramento	1,587,542	1,583,966	1,578,644	1,581,831
San Benito	64,450	65,182	65,481	65,082
San Bernardino	2,185,348	2,183,756	2,179,263	2,170,593
San Diego	3,304,801	3,285,268	3,293,911	3,297,860
San Francisco	870,734	841,721	843,094	848,019
San Joaquin	779,968	781,946	784,017	784,528
San Luis Obispo	282,671	278,527	280,629	280,251
San Mateo	762,754	749,908	746,262	749,075
Santa Barbara	447,860	439,100	443,956	442,614
Santa Clara	1,926,546	1,899,926	1,903,274	1,911,749
Santa Cruz	271,222	263,170	265,158	263,101
Shasta	182,029	181,374	179,786	178,958
Sierra	3,232	3,212	3,186	3,152
Siskiyou	43,996	43,543	43,307	42,961
Solano	452,943	449,539	447,012	446,745
Sonoma	488,765	483,300	481,297	479,826
Stanislaus	553,129	550,885	547,905	545,704
Sutter	99,474	99,020	98,641	98,151
Tehama	65,847	65,424	64,993	64,677
Trinity	16,107	16,009	15,927	15,870
Tulare	472,757	474,780	474,861	474,792
Tuolumne	55,492	54,690	53,409	53,387
Ventura	844,214	837,619	830,434	825,937
Yolo	217,883	214,339	221,342	220,381
Yuba	81,919	82,256	82,667	83,297
California	39,541,722	39,246,702	39,146,273	39,109,070

E-2. California County Numeric Change
Revised July 1, 2020 through Preliminary July 1, 2023
Table 5.

Numeric Population Change

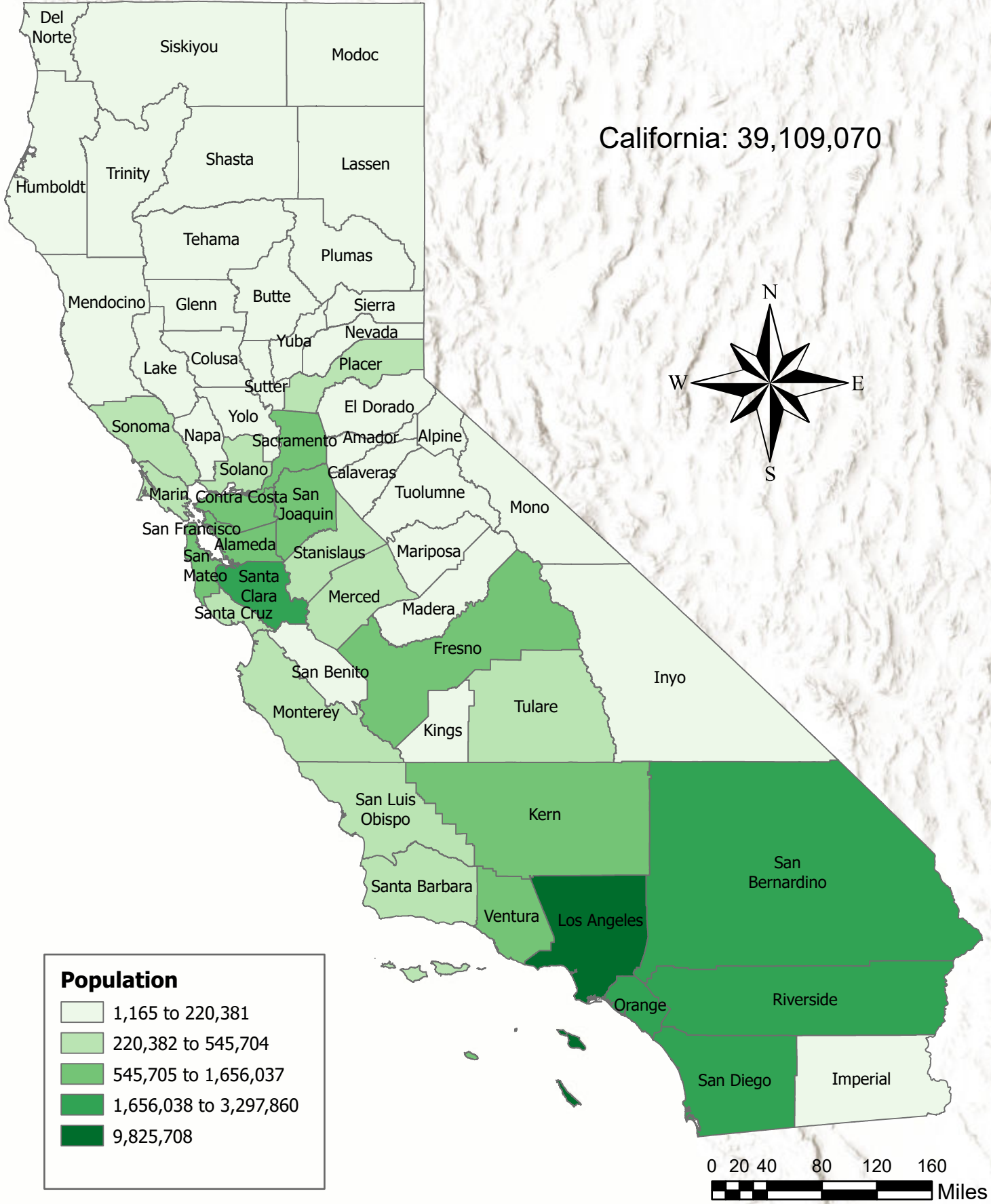
County	2020-2021	2021-2022	2022-2023
Alameda	-23,022	-7,490	6,062
Alpine	-22	-5	-10
Amador	-178	-157	17
Butte	-4,228	377	-638
Calaveras	-251	-242	-164
Colusa	17	-70	91
Contra Costa	-7,426	-9,787	-3,578
Del Norte	-277	-630	-356
El Dorado	-85	-2,051	-2,101
Fresno	2,981	1,045	962
Glenn	-145	-260	-410
Humboldt	-1,711	-38	-269
Imperial	-569	107	-275
Inyo	-80	-27	-116
Kern	2,635	290	-5,336
Kings	-780	203	451
Lake	-150	-508	-760
Lassen	-872	-1,510	-1,312
Los Angeles	-106,076	-67,847	-15,217
Madera	586	279	1,170
Marin	-3,442	-2,868	-1,107
Mariposa	-87	-72	-83
Mendocino	-465	-894	-644
Merced	567	3,445	460
Modoc	-144	-25	-71
Mono	-92	-91	88
Monterey	-1,413	-1,506	-367
Napa	-1,167	-1,394	-1,013
Nevada	-213	-1,298	-737
Orange	-23,804	-10,806	-11,765
Placer	2,274	923	1,014
Plumas	-138	-453	-325
Riverside	5,980	2,935	-949
Sacramento	-3,576	-5,322	3,187
San Benito	732	299	-399
San Bernardino	-1,592	-4,493	-8,670
San Diego	-19,533	8,643	3,949
San Francisco	-29,013	1,373	4,925
San Joaquin	1,978	2,071	511
San Luis Obispo	-4,144	2,102	-378
San Mateo	-12,846	-3,646	2,813
Santa Barbara	-8,760	4,856	-1,342
Santa Clara	-26,620	3,348	8,475
Santa Cruz	-8,052	1,988	-2,057
Shasta	-655	-1,588	-828
Sierra	-20	-26	-34
Siskiyou	-453	-236	-346
Solano	-3,404	-2,527	-267
Sonoma	-5,465	-2,003	-1,471
Stanislaus	-2,244	-2,980	-2,201
Sutter	-454	-379	-490
Tehama	-423	-431	-316
Trinity	-98	-82	-57
Tulare	2,023	81	-69
Tuolumne	-802	-1,281	-22
Ventura	-6,595	-7,185	-4,497
Yolo	-3,544	7,003	-961
Yuba	337	411	630
California	(295,020)	(100,429)	(37,203)

California County Percent Change
 Revised July 1, 2020 through Preliminary July 1, 2023
 Table 6.

Percent Population Change			
County	2020- 2021	2021- 2022	2022- 2023
Alameda	-1.4	-0.5	0.4
Alpine	-1.8	-0.4	-0.9
Amador	-0.4	-0.4	0.0
Butte	-2.0	0.2	-0.3
Calaveras	-0.6	-0.5	-0.4
Colusa	0.1	-0.3	0.4
Contra Costa	-0.6	-0.8	-0.3
Del Norte	-1.0	-2.3	-1.3
El Dorado	0.0	-1.1	-1.1
Fresno	0.3	0.1	0.1
Glenn	-0.5	-0.9	-1.4
Humboldt	-1.3	0.0	-0.2
Imperial	-0.3	0.1	-0.2
Inyo	-0.4	-0.1	-0.6
Kern	0.3	0.0	-0.6
Kings	-0.5	0.1	0.3
Lake	-0.2	-0.8	-1.1
Lassen	-2.7	-4.9	-4.4
Los Angeles	-1.1	-0.7	-0.2
Madera	0.4	0.2	0.7
Marin	-1.3	-1.1	-0.4
Mariposa	-0.5	-0.4	-0.5
Mendocino	-0.5	-1.0	-0.7
Merced	0.2	1.2	0.2
Modoc	-1.7	-0.3	-0.8
Mono	-0.7	-0.7	0.7
Monterey	-0.3	-0.3	-0.1
Napa	-0.8	-1.0	-0.7
Nevada	-0.2	-1.3	-0.7
Orange	-0.7	-0.3	-0.4
Placer	0.6	0.2	0.2
Plumas	-0.7	-2.3	-1.7
Riverside	0.2	0.1	0.0
Sacramento	-0.2	-0.3	0.2
San Benito	1.1	0.5	-0.6
San Bernardino	-0.1	-0.2	-0.4
San Diego	-0.6	0.3	0.1
San Francisco	-3.3	0.2	0.6
San Joaquin	0.3	0.3	0.1
San Luis Obispo	-1.5	0.8	-0.1
San Mateo	-1.7	-0.5	0.4
Santa Barbara	-2.0	1.1	-0.3
Santa Clara	-1.4	0.2	0.4
Santa Cruz	-3.0	0.8	-0.8
Shasta	-0.4	-0.9	-0.5
Sierra	-0.6	-0.8	-1.1
Siskiyou	-1.0	-0.5	-0.8
Solano	-0.8	-0.6	-0.1
Sonoma	-1.1	-0.4	-0.3
Stanislaus	-0.4	-0.5	-0.4
Sutter	-0.5	-0.4	-0.5
Tehama	-0.6	-0.7	-0.5
Trinity	-0.6	-0.5	-0.4
Tulare	0.4	0.0	0.0
Tuolumne	-1.4	-2.3	0.0
Ventura	-0.8	-0.9	-0.5
Yolo	-1.6	3.3	-0.4
Yuba	0.4	0.5	0.8
California	-0.7	-0.3	-0.1

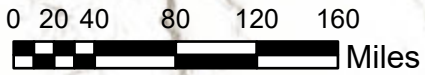
July 1, 2023 Population Estimates Population Distribution by County

California: 39,109,070



Population

1,165 to 220,381
220,382 to 545,704
545,705 to 1,656,037
1,656,038 to 3,297,860
9,825,708



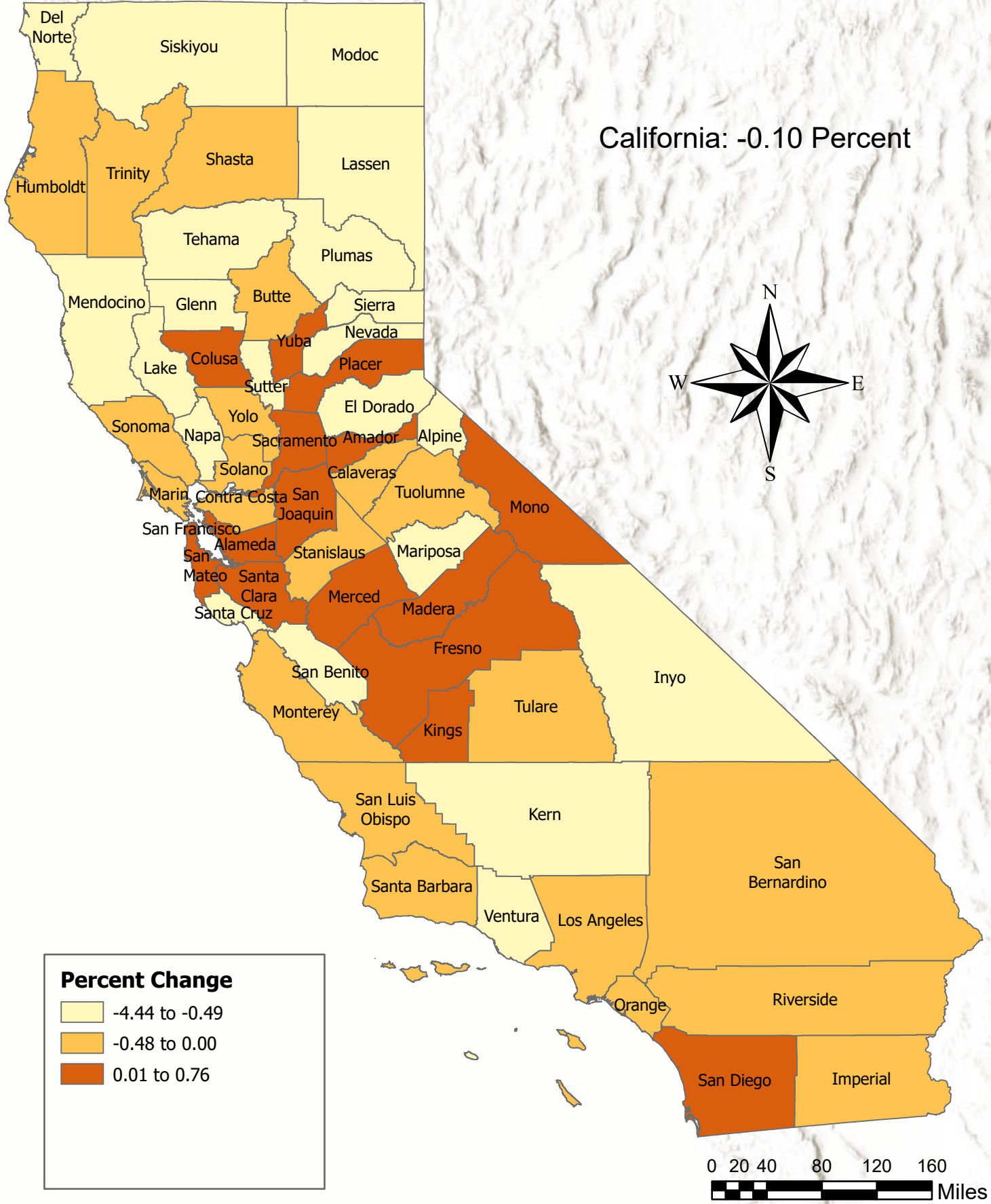
Esri, USGS

July 1, 2023 Population Estimates County Percentage of California's Population



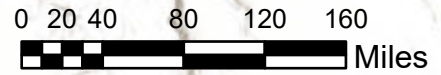
July 1, 2022 to July 1, 2023 Population Estimates Percent Change

California: -0.10 Percent



Percent Change

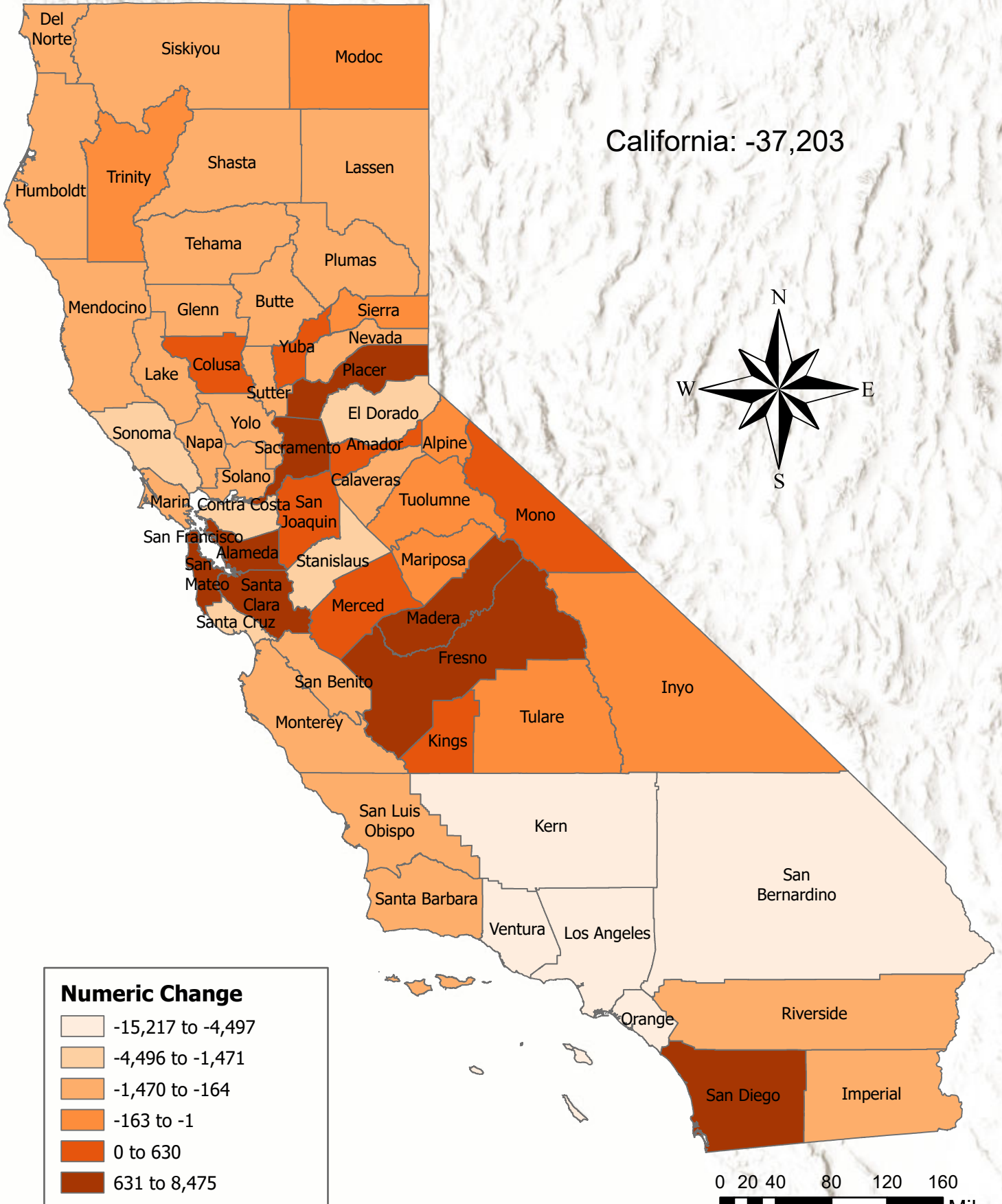
- 4.44 to -0.49
- 0.48 to 0.00
- 0.01 to 0.76



Esri, USGS

July 1, 2022 to July 1, 2023 Population Estimates Numeric Change

California: -37,203



Esri, USGS

July 1, 2022 to July 1, 2023 Population Estimates Natural Increase

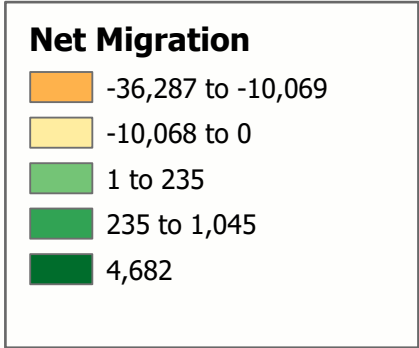
California: 107,269



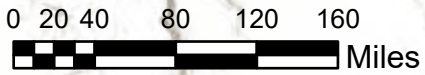
Esri, USGS

July 1, 2022 to July 1, 2023 Population Estimates Net Migration*

California: -144,472

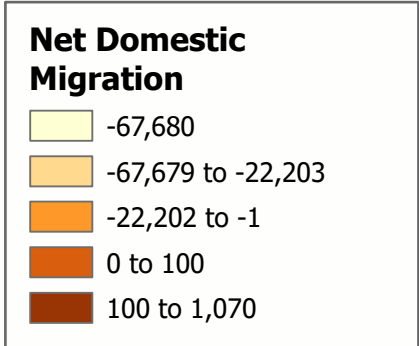


*The sum of net domestic migration and net immigration.



July 1, 2022 to July 1, 2023 Population Estimates Net Domestic Migration*

California: -260,408



*Persons moving to California from another U.S. state minus those moving out of California to another U.S. state.

July 1, 2022 to July 1, 2023 Population Estimates Net Immigration*

California: 115,936



*Persons moving to California from a foreign country minus those leaving the state to live abroad.